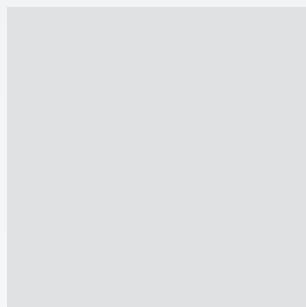
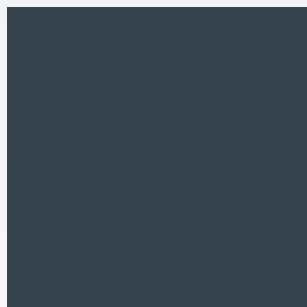
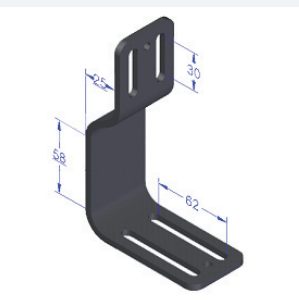
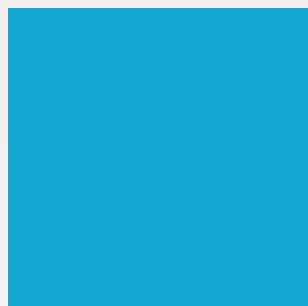
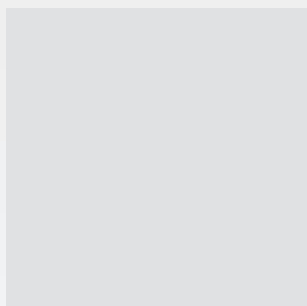
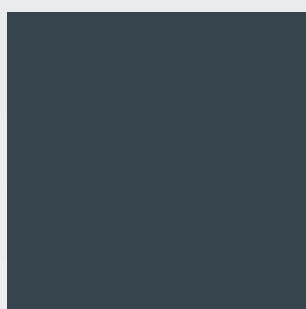
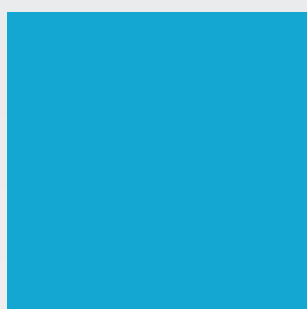




Catalogo Hardware/Hardware Catalog



www.promedicare.it



Indice/index

SEZIONE
SECTION

01

Hardware Capitis

SEZIONE
SECTION

02

Hardware Versa 3 pezzi
Versa Hardware 3 pieces

SEZIONE
SECTION

03

Hardware Estensione Schienale
Backrest Extension Hardware

SEZIONE
SECTION

04

Hardware Schienale
Backrest Hardware

SEZIONE
SECTION

05

Hardware Contenimento Toracico
Thoracic Support Hardware

SEZIONE
SECTION

06

Hardware Arti Superiori
Contenimento Bacino
Upper Limbs
Hip Guides Hardware

SEZIONE
SECTION

07

Variabile Sferico
Multi-Axial Applications (Sphere)

SEZIONE
SECTION

08

Variabile Bracciolo
Variable Armrest

SEZIONE
SECTION

09

Hardware Seduta
Seat Hardware

SEZIONE
SECTION

10

Variabile Basculamento Laterale
Variable Lateral Tilt

SEZIONE
SECTION

11

Variabile Divaricatore
Variable Abductor

SEZIONE
SECTION

12

Hardware Tavolino
Tray Hardware

SEZIONE
SECTION

13

Variabile Tavolino Ribaltabile
Variable Flip tray

SEZIONE
SECTION

14

Hardware Poggiapolpacci Separati
Separate Calf Supports Hardware

SEZIONE
SECTION

15

Variabile Poggiapolpacci Unico
Variable One piece Calf Support
Hardware

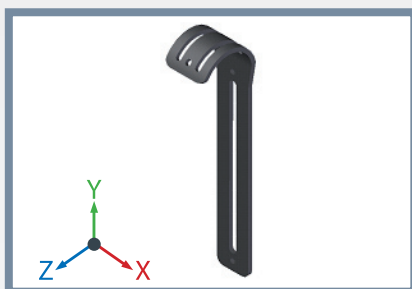
SEZIONE
SECTION

16

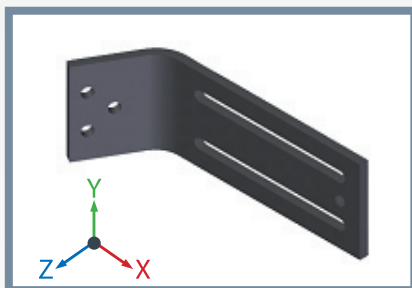
Minuterie
Screws/ Small components



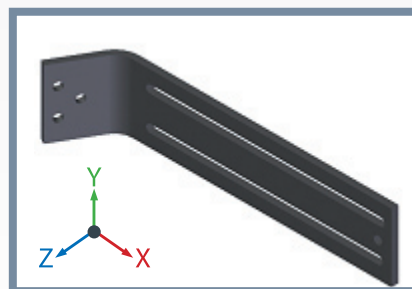
Hardware Capitis



NOME COMPONENTE ITEM	DESCRIZIONE (DESCRIPTION)	DIMENSIONI (X-Y-Z mm) DIMENSIONS (X-Y-Z mm)
PMD C-01	Staffa verticale per poggiatesta <i>Vertical bar</i>	50-273-68



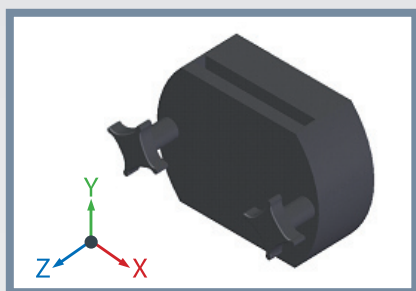
NOME COMPONENTE ITEM	DESCRIZIONE (DESCRIPTION)	DIMENSIONI (X-Y-Z mm) DIMENSIONS (X-Y-Z mm)
PMD C-02C	Staffa orizzontale Serie corta <i>Short horizontal bar</i>	143-50-41



NOME COMPONENTE ITEM	DESCRIZIONE (DESCRIPTION)	DIMENSIONI (X-Y-Z mm) DIMENSIONS (X-Y-Z mm)
PMD C-02	Staffa orizzontale Serie Standard <i>Long horizontal bar</i>	223-50-41

N.B.: Le staffe C02C e C02 sono in alternativa fra loro

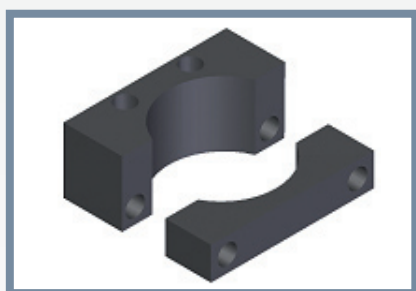
NOTE: The horizontal bars C02C and C02 are alternative to each other



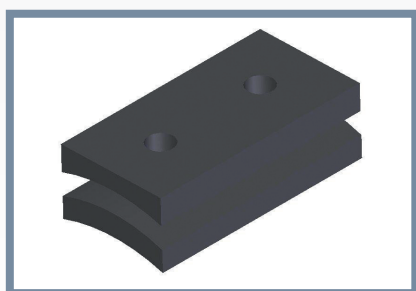
NOME COMPONENTE ITEM	DESCRIZIONE (DESCRIPTION)	DIMENSIONI (X-Y-Z mm) DIMENSIONS (X-Y-Z mm)
PMD C06	Attacco estraibile (viteria inclusa) <i>Detachable mounting unit, screws included</i>	70-52-25



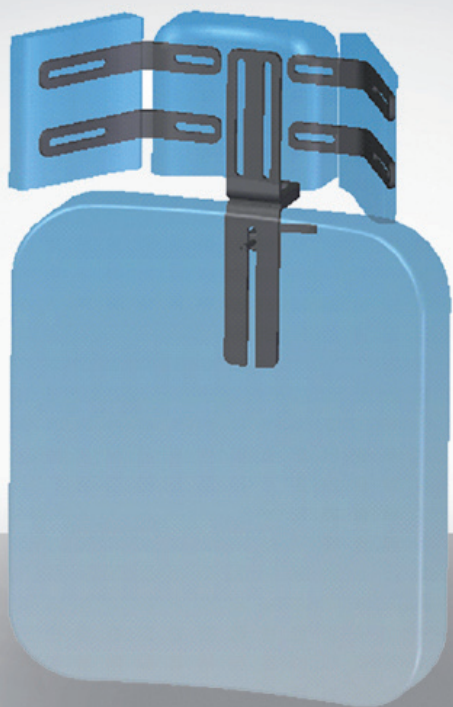
Esempi di Montaggio



NOME COMPONENTE ITEM	DESCRIZIONE (DESCRIPTION)	DIMENSIONI (X-Y-Z mm) DIMENSIONS (X-Y-Z mm)
PMD C08	Alloggio sfera viteria inclusa <i>Ball housing elements screws included</i>	//

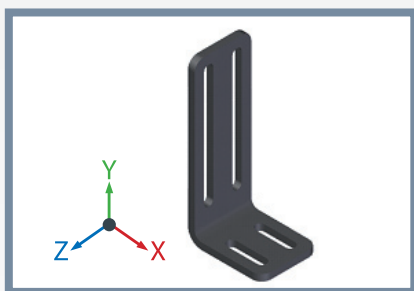


NOME COMPONENTE ITEM	DESCRIZIONE (DESCRIPTION)	DIMENSIONI (X-Y-Z mm) DIMENSIONS (X-Y-Z mm)
PMD C11	Piastrina di serraggio viteria inclusa <i>Interlocking plates screws included</i>	//

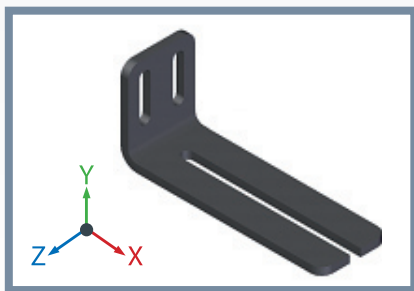


Hardware **Versa** 3 pezzi

Versa Hardware 3 pieces

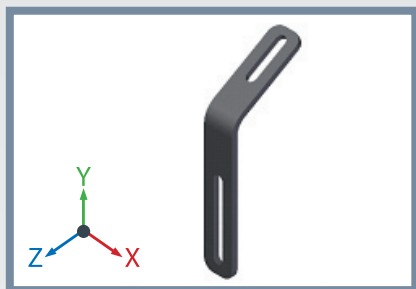


NOME COMPONENTE ITEM	DESCRIZIONE (DESCRIPTION)	DIMENSIONI (X-Y-Z mm) DIMENSIONS (X-Y-Z mm)
PMD V05-1	Staffa ad L fissa <i>Fixed L bracket</i>	65-140-50



NOME COMPONENTE ITEM	DESCRIZIONE (DESCRIPTION)	DIMENSIONI (X-Y-Z mm) DIMENSIONS (X-Y-Z mm)
PMD V05-2	Staffa ad L estraibile <i>Removable L bracket</i>	150-65-50

Hardware **Versa** 3 pezzi **Versa** Hardware 3 pieces



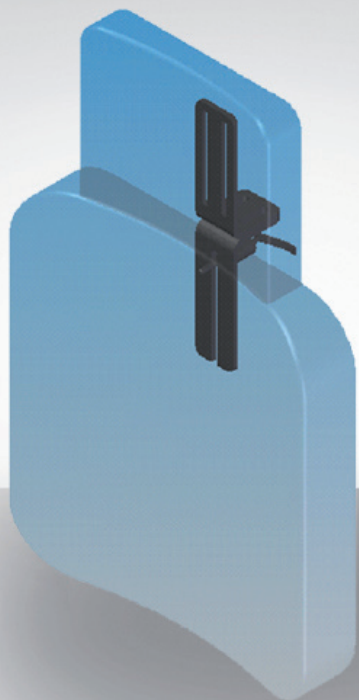
NOME COMPONENTE ITEM	DESCRIZIONE (DESCRIPTION)	DIMENSIONI (X-Y-Z mm) DIMENSIONS (X-Y-Z mm)
S36M	Staffetta fissaggio per alette poggiatesta <i>Mounting bracket for headrest wing</i>	62-120-25



NOME COMPONENTE ITEM	DESCRIZIONE (DESCRIPTION)	DIMENSIONI (X-Y-Z mm) DIMENSIONS (X-Y-Z mm)
PMD 005-007 M6x30	Leva Scatto <i>Click Lever</i>	//

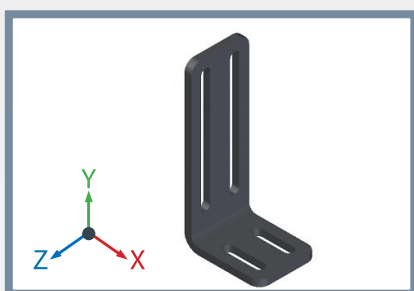
Disponibile anche M8x20 / Also available M8x20

Hardware **Versa** 3 pezzi
Versa Hardware 3 pieces

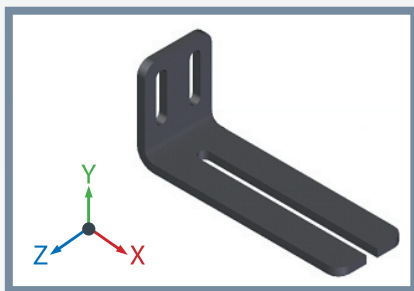


Hardware Estensione Schienale

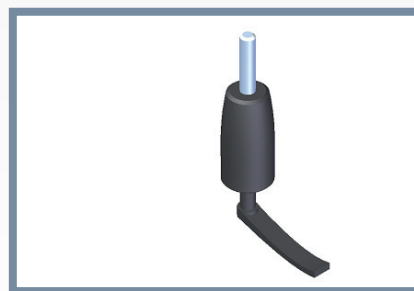
Backrest Extension Hardware



NOME COMPONENTE ITEM	DESCRIZIONE (DESCRIPTION)	DIMENSIONI (X-Y-Z mm) DIMENSIONS (X-Y-Z mm)
PMD V05-1	Staffa ad L fissa <i>Fixed L bracket</i>	65-140-50



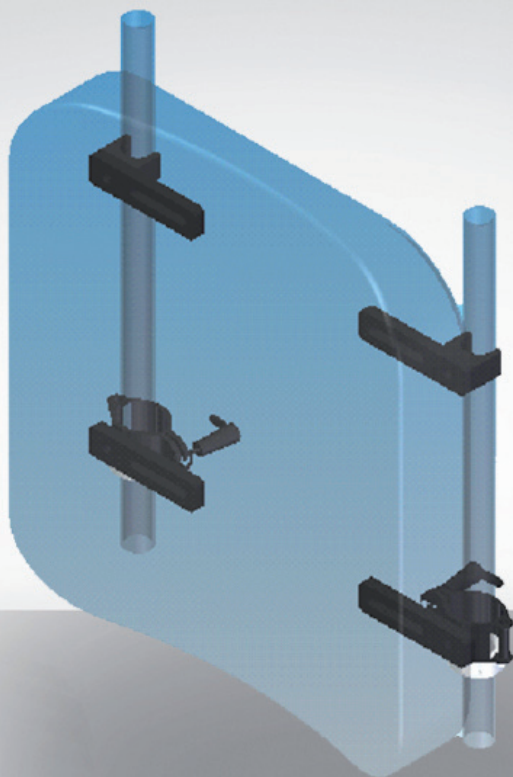
NOME COMPONENTE ITEM	DESCRIZIONE (DESCRIPTION)	DIMENSIONI (X-Y-Z mm) DIMENSIONS (X-Y-Z mm)
PMD V05-2	Staffa ad L estraibile <i>Removable L bracket</i>	150-65-50



NOME COMPONENTE ITEM	DESCRIZIONE (DESCRIPTION)	DIMENSIONI (X-Y-Z mm) DIMENSIONS (X-Y-Z mm)
PMD 005-007 M6x30	Leva Scatto <i>Click Lever</i>	//

Disponibilità Collari Φ 22 Φ 20 Φ 10

Collars available Φ 22 Φ 20 Φ 10



Hardware Schienale

Backrest Hardware



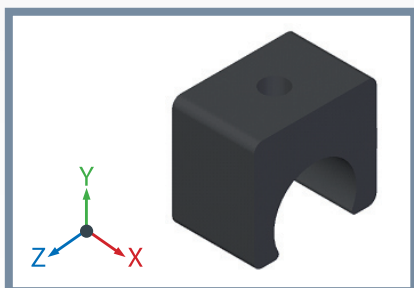
NOME COMPONENTE
ITEM

PMD 002-020
PMD 002-022
PMD 002-025

DESCRIZIONE
(DESCRIPTION)

Attacco per tubo a serraggio
Φ 20/22/25, viteria inclusa
Securing clamp Φ20/22/25
screws included

DIMENSIONI (X-Y-Z mm)
DIMENSIONS (X-Y-Z mm)



NOME COMPONENTE
ITEM

PMD 001-020
PMD 001-022
PMD 001-025

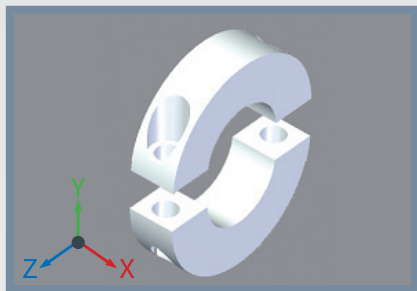
DESCRIZIONE
(DESCRIPTION)

Clamp in Nylon Φ20/22/25
viteria inclusa
Nylon interlocking clamp
Φ20/22/25, screws included

DIMENSIONI (X-Y-Z mm)
DIMENSIONS (X-Y-Z mm)

20-29,5-35

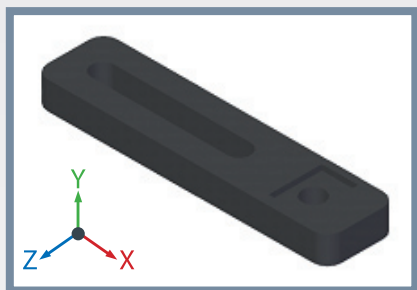
Disponibilità Clamp Φ 22 e Φ 20/Clamps available Φ 22 and Φ 20



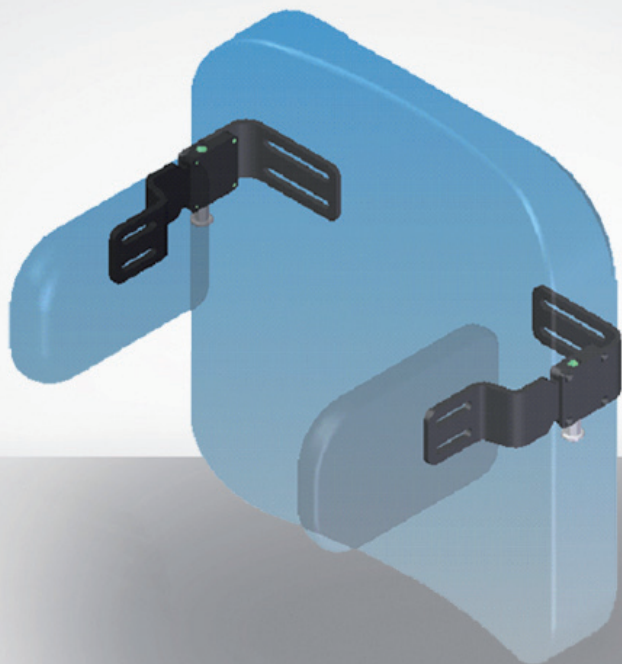
NOME COMPONENTE ITEM	DESCRIZIONE (DESCRIPTION)	DIMENSIONI (X-Y-Z mm) DIMENSIONS (X-Y-Z mm)
PMD 003-010 PMD 003-020 PMD 003-022 PMD 003-025	Collare in alluminio Φ10/20/22/2, viteria inclusa <i>Aluminum docking collar Φ10/20/22/25 screws included</i>	12-45-45

Disponibilità Collari Φ 22 Φ 20 Φ 10

Collars available Φ 22 Φ 20 Φ 10

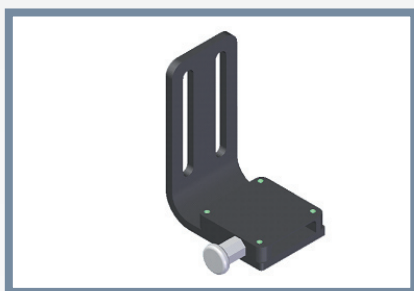


NOME COMPONENTE ITEM	DESCRIZIONE (DESCRIPTION)	DIMENSIONI (X-Y-Z mm) DIMENSIONS (X-Y-Z mm)
PMD 102	Piastra fissaggio clamp, viteria inclusa <i>Locking clamp plate, screws included</i>	105-10-25

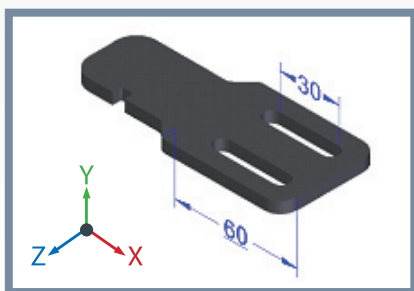


Hardware Contenimento **Toracico**

Thoracic Support Hardware

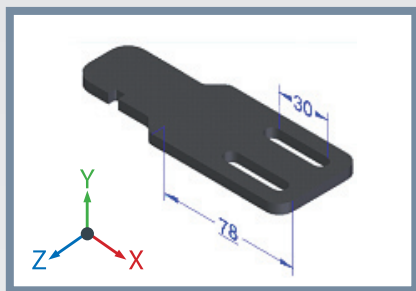


NOME COMPONENTE ITEM	DESCRIZIONE (DESCRIPTION)	DIMENSIONI (X-Y-Z mm) DIMENSIONS (X-Y-Z mm)
PMD 04DX PMD 04SX	Corpo Staffa Sistema ad estrazione rapida Versione dx e sx <i>Left and right quick release bracket housing</i>	

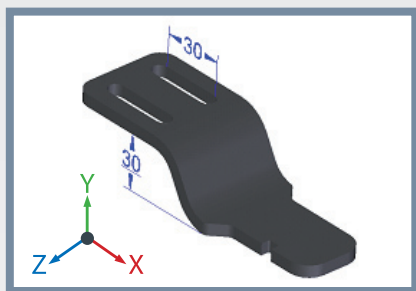


NOME COMPONENTE ITEM	DESCRIZIONE (DESCRIPTION)	DIMENSIONI (X-Y-Z mm) DIMENSIONS (X-Y-Z mm)
PMD S2ASX PMD S2ADX	Inserto staffa estraibile ad L serie corta. Versione dx e sx. <i>Left and right detachable inserting L bracket Short series</i>	115-50

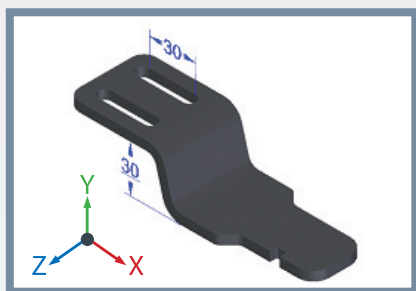
Staffe compatibili e d'uso nell'insieme - *Interchangeable brackets*



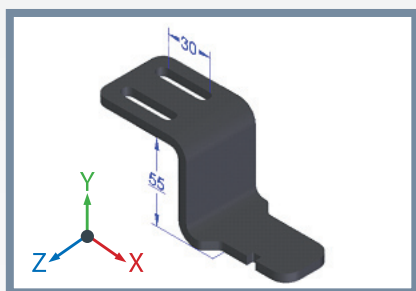
NOME COMPONENTE ITEM	DESCRIZIONE (DESCRIPTION)	DIMENSIONI (X-Y-Z mm) DIMENSIONS (X-Y-Z mm)
PMD S2ALDX PMD S2ALSX	Inserto staffa estraibile ad L serie Lunga (Versione dx e sx) <i>Left and right detachable inserting L bracket Long series</i>	135-50



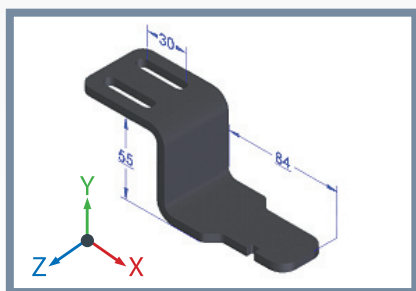
NOME COMPONENTE ITEM	DESCRIZIONE (DESCRIPTION)	DIMENSIONI (X-Y-Z mm) DIMENSIONS (X-Y-Z mm)
PMD S4BDX PMD S4BSX	Inserto staffa estraibile rientrante da 1" Serie Standard (versione Dx e Sx) <i>Left and right detachable inserting bracket 1" offset Short series</i>	138-35-50



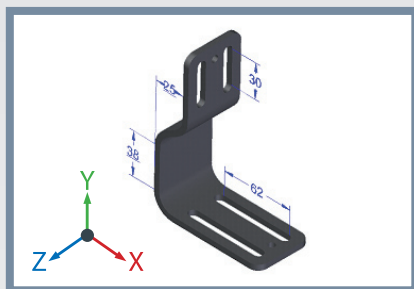
NOME COMPONENTE ITEM	DESCRIZIONE (DESCRIPTION)	DIMENSIONI (X-Y-Z mm) DIMENSIONS (X-Y-Z mm)
PMD S4BLDX PMD S4BLSX	Inserto staffa estraibile rientrante da 1" Serie Lunga (versione Dx e Sx) <i>Left and right detachable inserting bracket 1" offset Long series</i>	150-35-50



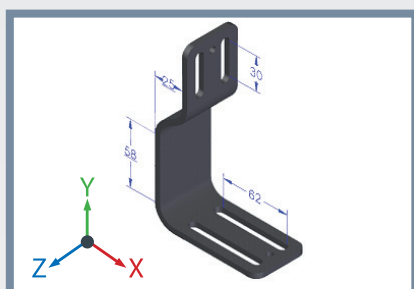
NOME COMPONENTE ITEM	DESCRIZIONE (DESCRIPTION)	DIMENSIONI (X-Y-Z mm) DIMENSIONS (X-Y-Z mm)
PMD S4CDX PMD S4CSX	Inserto staffa estraibile rientrante da 2" Serie Standard (versione Dx e Sx) <i>Left and right detachable inserting bracket 2" offset Short series</i>	130-60-50



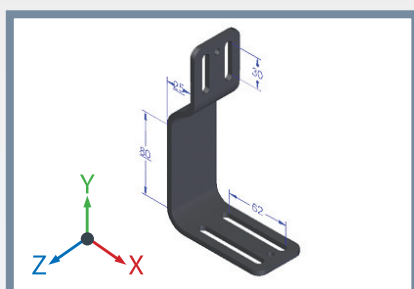
NOME COMPONENTE ITEM	DESCRIZIONE (DESCRIPTION)	DIMENSIONI (X-Y-Z mm) DIMENSIONS (X-Y-Z mm)
PMD S4CLDX PMD S4CLSX	Inserto staffa estraibile rientrante da 2" Serie Lunga (versione Dx e Sx) <i>Left and right detachable inserting bracket 2" offset long series</i>	150-60-50



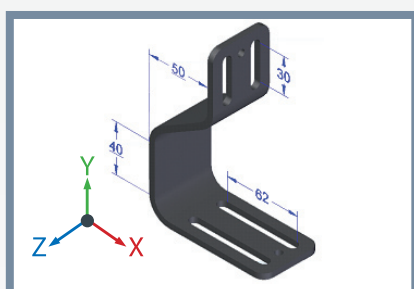
NOME COMPONENTE ITEM	DESCRIZIONE (DESCRIPTION)	DIMENSIONI (X-Y-Z mm) DIMENSIONS (X-Y-Z mm)
S1B	Staffa fissa rientrante da 1" Serie Standard 1" offset short bracket	139-99-50



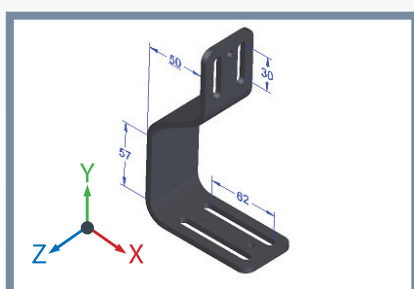
NOME COMPONENTE ITEM	DESCRIZIONE (DESCRIPTION)	DIMENSIONI (X-Y-Z mm) DIMENSIONS (X-Y-Z mm)
S1BL	Staffa fissa rientrante da 1" Serie Lunga 1" offset long bracket	160-99-50



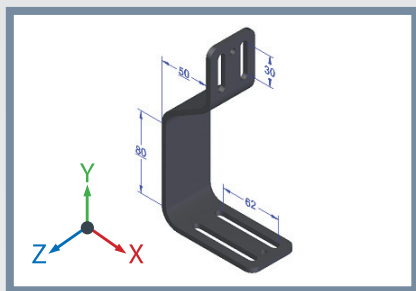
NOME COMPONENTE ITEM	DESCRIZIONE (DESCRIPTION)	DIMENSIONI (X-Y-Z mm) DIMENSIONS (X-Y-Z mm)
S1BA	Staffa fissa rientrante da 1" Serie Extralunga 1" offset extra-long bracket	180-99-50



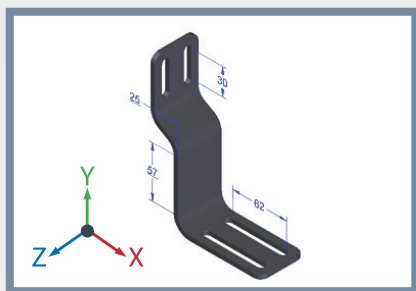
NOME COMPONENTE ITEM	DESCRIZIONE (DESCRIPTION)	DIMENSIONI (X-Y-Z mm) DIMENSIONS (X-Y-Z mm)
S1C	Staffa Fissa rientrante da 2" Serie Standard 2" offset short bracket	149-99-50



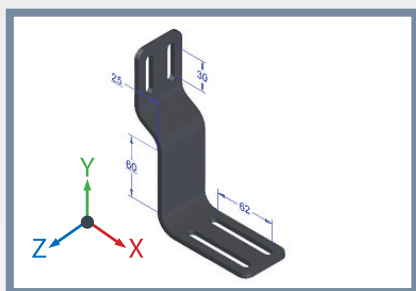
NOME COMPONENTE ITEM	DESCRIZIONE (DESCRIPTION)	DIMENSIONI (X-Y-Z mm) DIMENSIONS (X-Y-Z mm)
S1CL	Staffa Fissa rientrante da 2" Serie Lunga 2" offset long bracket	174-99-50



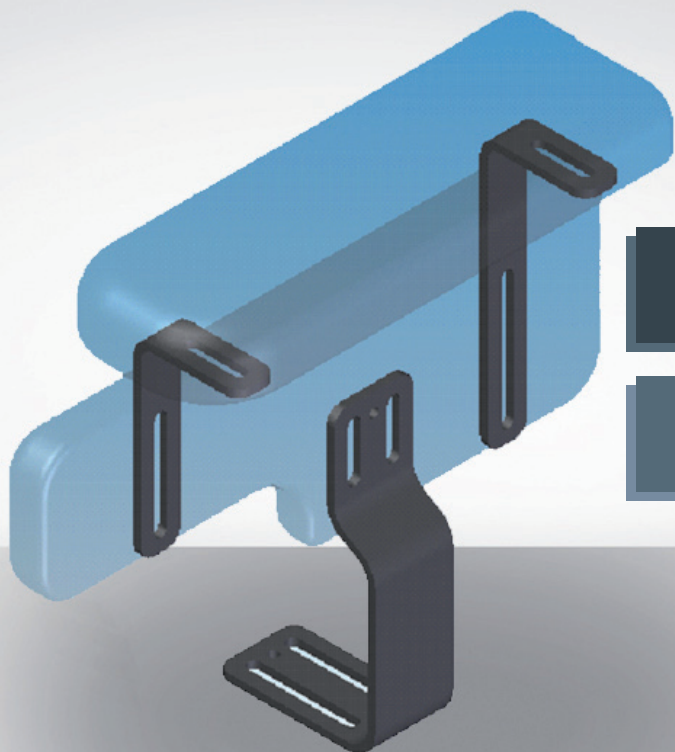
NOME COMPONENTE ITEM	DESCRIZIONE (DESCRIPTION)	DIMENSIONI (X-Y-Z mm) DIMENSIONS (X-Y-Z mm)
S1CA	Staffa Fissa rientrante da 2" Serie Extralunga <i>2" offset extra-long bracket</i>	189-99-50



NOME COMPONENTE ITEM	DESCRIZIONE (DESCRIPTION)	DIMENSIONI (X-Y-Z mm) DIMENSIONS (X-Y-Z mm)
S1D	Staffa Fissa Reversibile rientrante da 1" Serie Standard <i>1" reverse bracket short series</i>	160-124-50

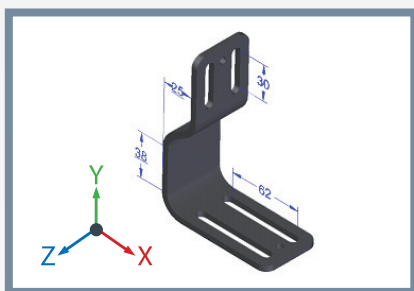


NOME COMPONENTE ITEM	DESCRIZIONE (DESCRIPTION)	DIMENSIONI (X-Y-Z mm) DIMENSIONS (X-Y-Z mm)
S1DL	Staffa Fissa Reversibile rientrante da 1" Serie Lunga <i>1" reverse bracket long series</i>	180-124-50

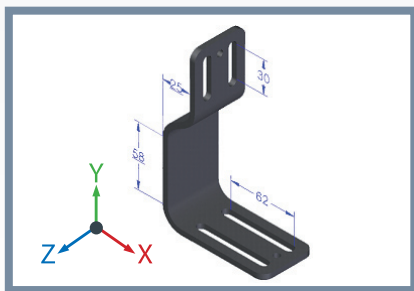


Hardware **Arti Superiori**
 Contenimento bacino

Upper **Limbs**
 Hip Guides Hardware

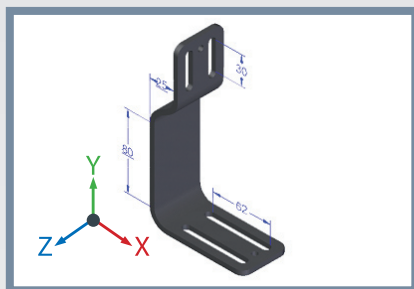


NOME COMPONENTE ITEM	DESCRIZIONE (DESCRIPTION)	DIMENSIONI (X-Y-Z mm) DIMENSIONS (X-Y-Z mm)
S1B	Staffa fissa rientrante da 1" Serie Standard 1" offset short bracket	139-99-50

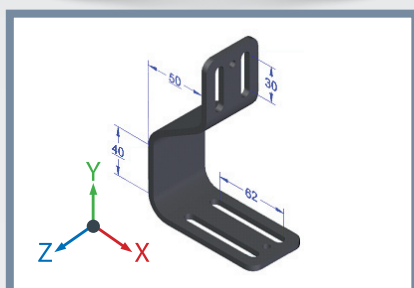


NOME COMPONENTE ITEM	DESCRIZIONE (DESCRIPTION)	DIMENSIONI (X-Y-Z mm) DIMENSIONS (X-Y-Z mm)
S1BL	Staffa fissa rientrante da 1" Serie Lunga 1" offset long bracket	160-99-50

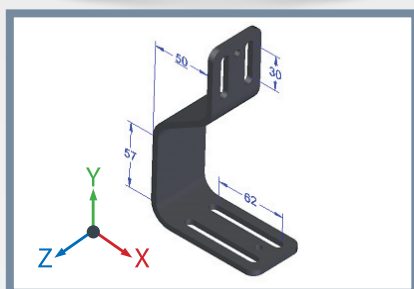
Staffe compatibili e d'uso nell'insieme - *Interchangeable brackets*



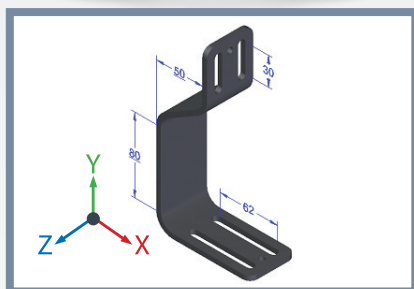
NOME COMPONENTE ITEM	DESCRIZIONE (DESCRIPTION)	DIMENSIONI (X-Y-Z mm) DIMENSIONS (X-Y-Z mm)
S1BA	Staffa fissa rientrante da 1" Serie Extralunga 1" offset extra-long bracket	180-99-50



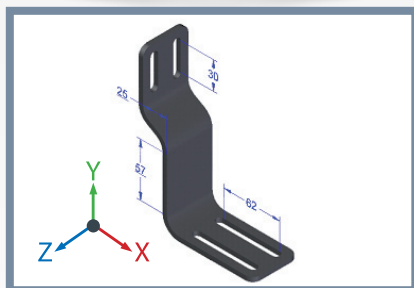
NOME COMPONENTE ITEM	DESCRIZIONE (DESCRIPTION)	DIMENSIONI (X-Y-Z mm) DIMENSIONS (X-Y-Z mm)
S1C	Staffa Fissa rientrante da 2" Serie Standard 2" offset short bracket	149-99-50



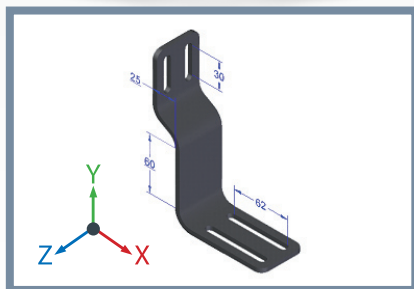
NOME COMPONENTE ITEM	DESCRIZIONE (DESCRIPTION)	DIMENSIONI (X-Y-Z mm) DIMENSIONS (X-Y-Z mm)
S1CL	Staffa Fissa rientrante da 2" Serie Lunga 2" offset long bracket	174-99-50



NOME COMPONENTE ITEM	DESCRIZIONE (DESCRIPTION)	DIMENSIONI (X-Y-Z mm) DIMENSIONS (X-Y-Z mm)
S1CA	Staffa Fissa rientrante da 2" Serie Extralunga 2" offset extra-long bracket	189-99-50

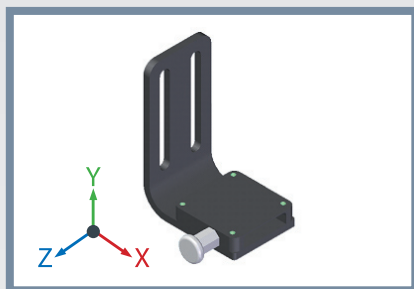


NOME COMPONENTE ITEM	DESCRIZIONE (DESCRIPTION)	DIMENSIONI (X-Y-Z mm) DIMENSIONS (X-Y-Z mm)
S1D	Staffa Fissa Reversibile rientrante da 1" Serie Standard 1" reverse bracket short series	160-124-50

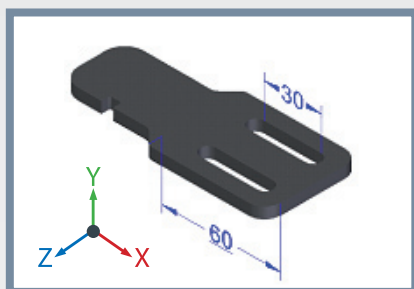


NOME COMPONENTE ITEM	DESCRIZIONE (DESCRIPTION)	DIMENSIONI (X-Y-Z mm) DIMENSIONS (X-Y-Z mm)
S1DL	Staffa Fissa Reversibile rientrante da 1" Serie Lunga 1" reverse bracket long series	180-124-50

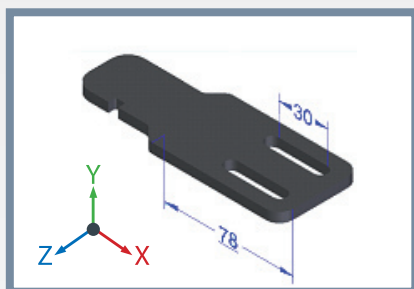
Staffe compatibili e d'uso nell'insieme - *Interchangeable brackets*



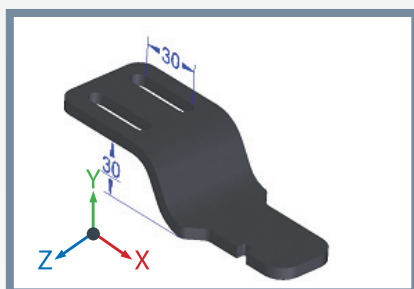
NOME COMPONENTE ITEM	DESCRIZIONE (DESCRIPTION)	DIMENSIONI (X-Y-Z mm) DIMENSIONS (X-Y-Z mm)
PMD 04DX PMD 04SX	Corpo Staffa Sistema destro e sinistro ad estrazione rapida <i>Left and right quick release bracket housing</i>	



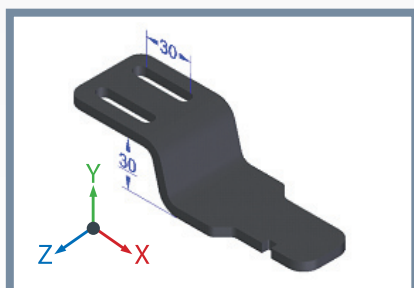
NOME COMPONENTE ITEM	DESCRIZIONE (DESCRIPTION)	DIMENSIONI (X-Y-Z mm) DIMENSIONS (X-Y-Z mm)
PMD S2ASX PMD S2ADX	Inserto staffa estraibile ad L serie corta (Versione dx e sx) <i>Left and right detachable inserting L bracket Short series</i>	115-50



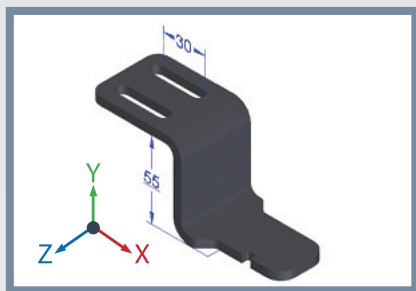
NOME COMPONENTE ITEM	DESCRIZIONE (DESCRIPTION)	DIMENSIONI (X-Y-Z mm) DIMENSIONS (X-Y-Z mm)
PMD S2ALDX PMD S2ALSX	Inserto staffa estraibile ad L serie Lunga (Versione dx e sx) <i>Left and right detachable inserting L bracket Long series</i>	135-50



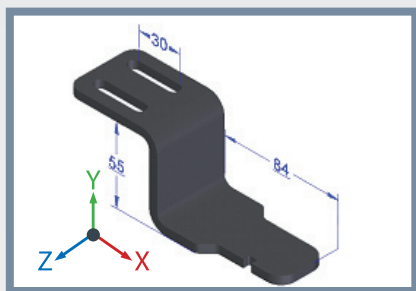
NOME COMPONENTE ITEM	DESCRIZIONE (DESCRIPTION)	DIMENSIONI (X-Y-Z mm) DIMENSIONS (X-Y-Z mm)
PMD S4BDX PMD S4BSX	Inserto staffa estraibile rientrante da 1" Serie Standard (versione Dx e Sx) <i>Left and right detachable inserting bracket 1" offset Short series</i>	138-35-50



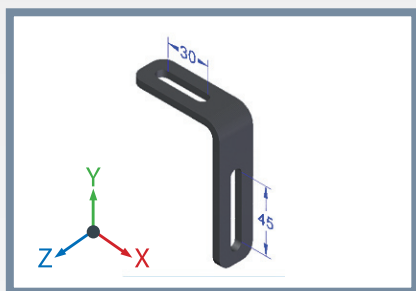
NOME COMPONENTE ITEM	DESCRIZIONE (DESCRIPTION)	DIMENSIONI (X-Y-Z mm) DIMENSIONS (X-Y-Z mm)
PMD S4BLDX PMD S4BLSX	Inserto staffa estraibile rientrante da 1" Serie Lunga (versione Dx e Sx) <i>Left and right detachable inserting bracket 1" offset Long series</i>	150-35-50



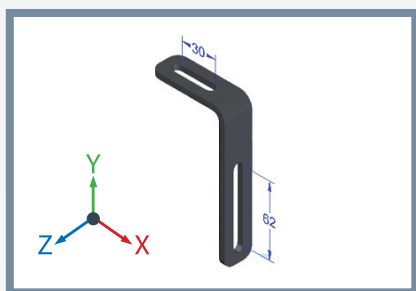
NOME COMPONENTE ITEM	DESCRIZIONE (DESCRIPTION)	DIMENSIONI (X-Y-Z mm) DIMENSIONS (X-Y-Z mm)
PMD S4CDX PMD S4CSX	Insero staffa estraibile rientrante da 2" Serie Standard (versione Dx e Sx) <i>Left and right detachable inserting bracket 2" offset Short series</i>	130-60-50



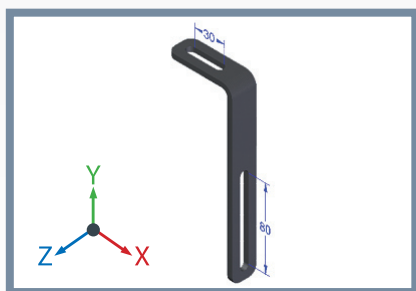
NOME COMPONENTE ITEM	DESCRIZIONE (DESCRIPTION)	DIMENSIONI (X-Y-Z mm) DIMENSIONS (X-Y-Z mm)
PMD S4CLDX PMD S4CLSX	Insero staffa estraibile rientrante da 2" Serie Lunga (versione Dx e Sx) <i>Left and right detachable inserting bracket 2" offset long series</i>	150-60-50



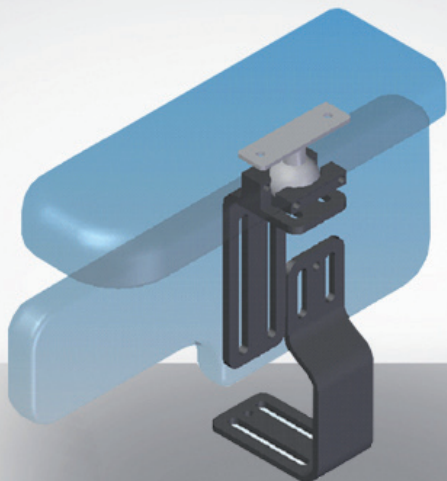
NOME COMPONENTE ITEM	DESCRIZIONE (DESCRIPTION)	DIMENSIONI (X-Y-Z mm) DIMENSIONS (X-Y-Z mm)
S36C	Staffa regolabile ad L serie Corta <i>Adjustable L short bracket</i>	62-90-25



NOME COMPONENTE ITEM	DESCRIZIONE (DESCRIPTION)	DIMENSIONI (X-Y-Z mm) DIMENSIONS (X-Y-Z mm)
S36	Staffa regolabile ad L serie Media <i>Adjustable L medium bracket</i>	62-120-25

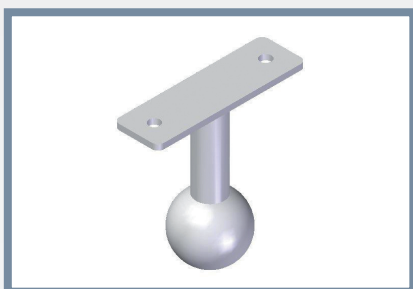


NOME COMPONENTE ITEM	DESCRIZIONE (DESCRIPTION)	DIMENSIONI (X-Y-Z mm) DIMENSIONS (X-Y-Z mm)
S36L	Staffa regolabile ad L serie lunga <i>Adjustable L long bracket</i>	62-170-25

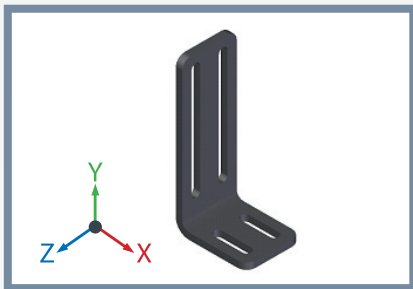


Variabile Sferico

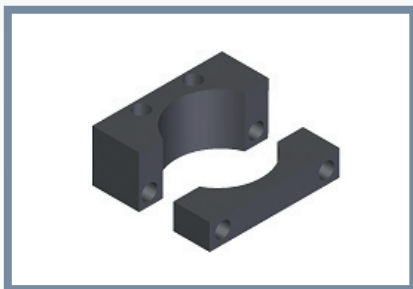
Multi-Axial Applications Sphere



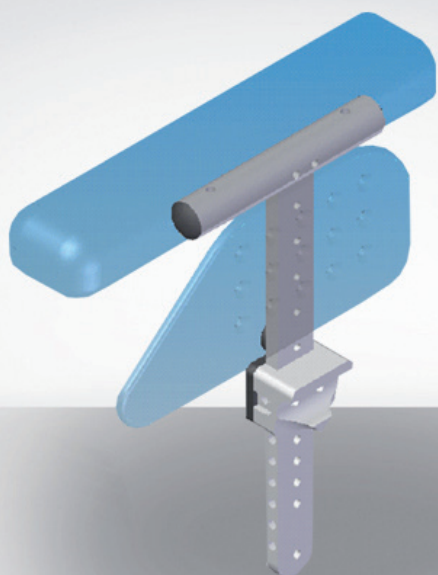
NOME COMPONENTE ITEM	DESCRIZIONE (DESCRIPTION)	DIMENSIONI (X-Y-Z mm) DIMENSIONS (X-Y-Z mm)
PMD C09	Articolazione Sferico <i>Multi-axial joint</i>	139-99-50



NOME COMPONENTE ITEM	DESCRIZIONE (DESCRIPTION)	DIMENSIONI (X-Y-Z mm) DIMENSIONS (X-Y-Z mm)
PMD V05-1	Staffa ad L fissa <i>Fixed L bracket</i>	65-140-50

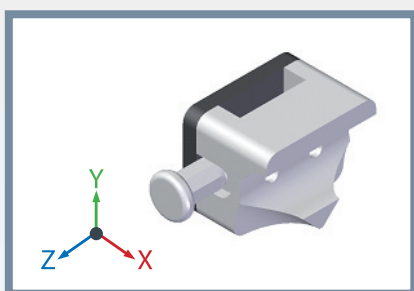


NOME COMPONENTE ITEM	DESCRIZIONE (DESCRIPTION)	DIMENSIONI (X-Y-Z mm) DIMENSIONS (X-Y-Z mm)
PMD C08	Alloggio sfera, viteria inclusa <i>Ball housing elements, screws included</i>	//

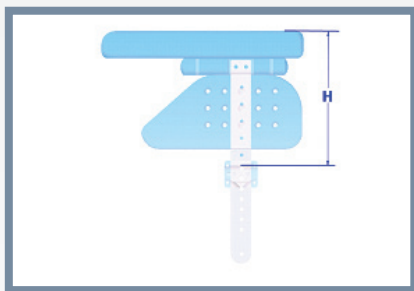


Variabile Bracciolo
 (solo su linea ADACTA)

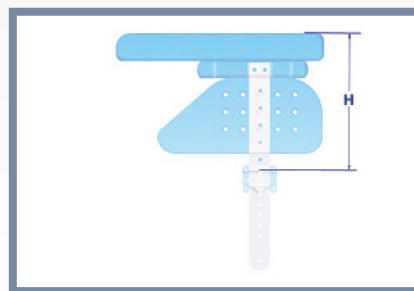
Variable Armrest
 (only on ADACTA range)



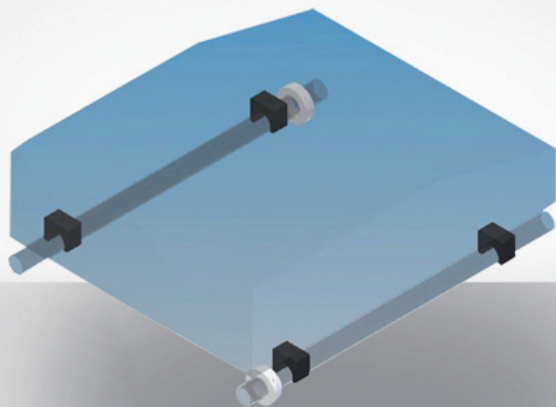
NOME COMPONENTE ITEM	DESCRIZIONE (DESCRIPTION)	DIMENSIONI (X-Y-Z mm) DIMENSIONS (X-Y-Z mm)
KIT-SP3-DX KIT-SP3-SX	Supporto Staffa scorrimento spondina (Versione Dx e Sx) <i>Bracket support for lateral guide sliding (Right and Left)</i>	139-99-50



NOME COMPONENTE ITEM	DESCRIZIONE (DESCRIPTION)	REGOLAZIONI ADJUSTEMENTS
KIT-SP1-DX KIT-SP1-SX KIT-SP2-DX KIT-SP2-SX	Kit Spondina c/appoggio a/superiore (Versione Dx e Sx) Serie Standard <i>Kit spondina with arm support (Right and Left)</i>	H= da 22-32 cm

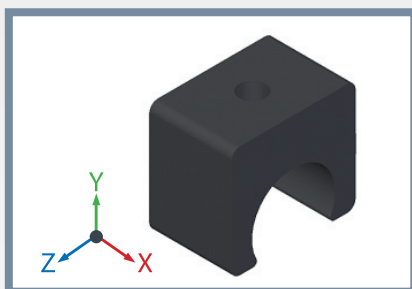


NOME COMPONENTE ITEM	DESCRIZIONE (DESCRIPTION)	REGOLAZIONI ADJUSTEMENTS
KIT-SP1-DXL KIT-SP1-SXL KIT-SP2-DXL KIT-SP2-SXL	Kit Spondina c/appoggio a/superiore (Versione Dx e Sx) Serie Lunga <i>Kit spondina with arm support Long series (Right and Left)</i>	H= da 30-40 cm



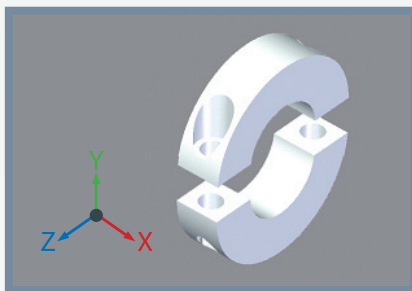
Hardware Seduta

Seat Hardware



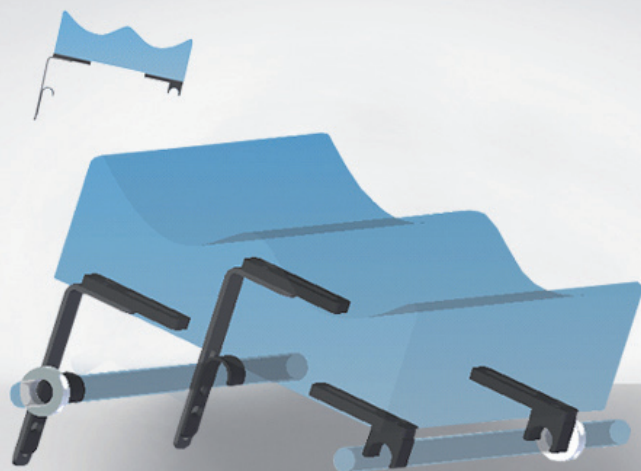
NOME COMPONENTE ITEM	DESCRIZIONE (DESCRIPTION)	DIMENSIONI (X-Y-Z mm) DIMENSIONS (X-Y-Z mm)
PMD 001-020 PMD 001-022 PMD 001-025	Clamp in Nylon $\Phi 20/22/25$, viteria inclusa <i>Nylon interlocking clamps $\Phi 20/22/25$, screws included</i>	20-29,5-35

Disponibilità Clamp $\Phi 22$ e $\Phi 20$ /Clamps available $\Phi 22$ and $\Phi 20$



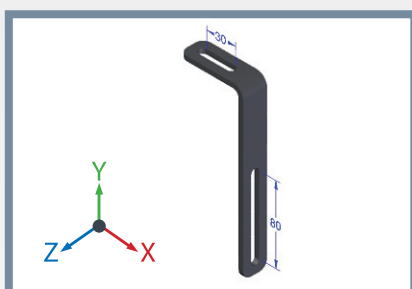
NOME COMPONENTE ITEM	DESCRIZIONE (DESCRIPTION)	DIMENSIONI (X-Y-Z mm) DIMENSIONS (X-Y-Z mm)
PMD 003-010 PMD 003-020 PMD 003-022 PMD 003-025	Collare in alluminio $\Phi 10/20/22/25$, viteria inclusa <i>Aluminum Locking collar $\Phi 10/20/22/25$, screws included</i>	12-45-45

Disponibilità Collari $\Phi 22$ $\Phi 20$ $\Phi 10$ /Collars available $\Phi 22$ $\Phi 20$ $\Phi 10$



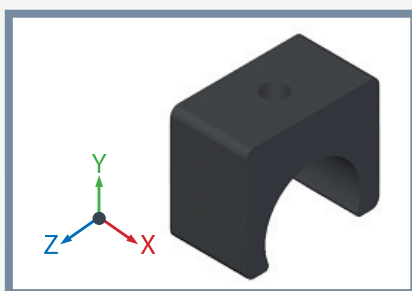
Variable Basculamento **Laterale**

Variable **Lateral** Tilt

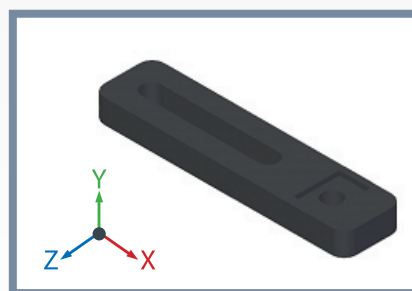


NOME COMPONENTE ITEM	DESCRIZIONE (DESCRIPTION)	DIMENSIONI (X-Y-Z mm) DIMENSIONS (X-Y-Z mm)
S36	Staffa regolabile ad L serie Media <i>Adjustable L medium bracket</i>	62-120-25

Variabile di montaggio con cod.S36C / Variable of use with item S36C



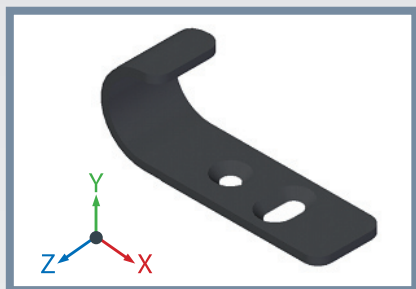
NOME COMPONENTE ITEM	DESCRIZIONE (DESCRIPTION)	DIMENSIONI (X-Y-Z mm) DIMENSIONS (X-Y-Z mm)
PMD 001-020 PMD 001-022 PMD 001-025	Clamp in Nylon $\Phi 20/22/25$ <i>Nylon interlocking clamps</i> $\Phi 20/22/25$	20-29,5-35



NOME COMPONENTE ITEM	DESCRIZIONE (DESCRIPTION)	DIMENSIONI (X-Y-Z mm) DIMENSIONS (X-Y-Z mm)
PMD 102	Piastra fissaggio clamp viteria inclusa <i>Locking clamp plate, screws included</i>	105-10-25

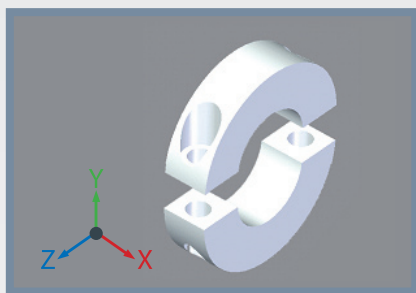
Variabile Basculamento Laterale

Variable Lateral Tilt



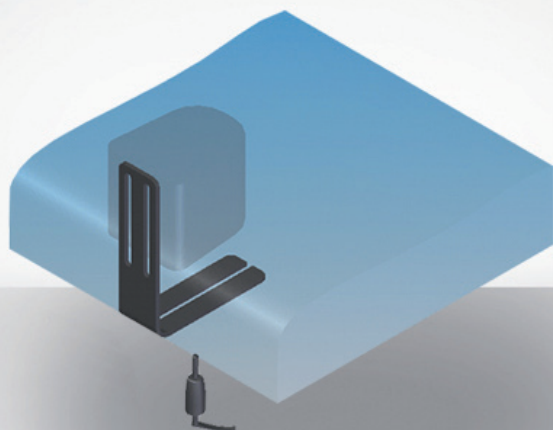
NOME COMPONENTE ITEM	DESCRIZIONE (DESCRIPTION)	DIMENSIONI (X-Y-Z mm) DIMENSIONS (X-Y-Z mm)
SU	Staffa ad uncino <i>Hook bracket</i>	81-32-25

Disponibilità Collari Φ 22 Φ 20 Φ 10 / Collars available Φ 22 Φ 20 Φ 10



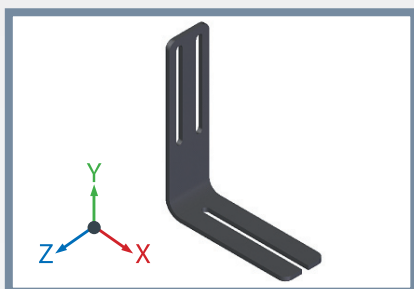
NOME COMPONENTE ITEM	DESCRIZIONE (DESCRIPTION)	DIMENSIONI (X-Y-Z mm) DIMENSIONS (X-Y-Z mm)
PMD 003-010 PMD 003-020 PMD 003-022 PMD 003-025	Collare in alluminio Φ 10/20/22/25, viteria inclusa <i>Aluminum Locking collar</i> Φ 10/20/22/25, screws included	12-45-45

Variabile Basculamento Laterale
 Variable Lateral Tilt

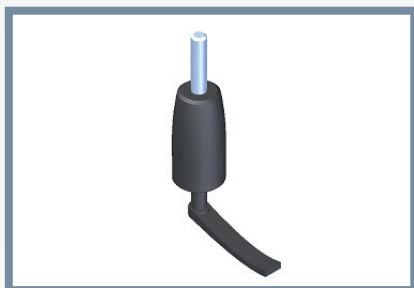


Variabile Divaricatore

Variable Abductor

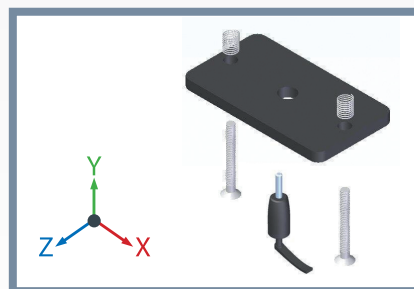


NOME COMPONENTE ITEM	DESCRIZIONE (DESCRIPTION)	DIMENSIONI (X-Y-Z mm) DIMENSIONS (X-Y-Z mm)
PMD V05-2	Staffa ad L estraibile Removable L bracket	150-186-50



NOME COMPONENTE ITEM	DESCRIZIONE (DESCRIPTION)	DIMENSIONI (X-Y-Z mm) DIMENSIONS (X-Y-Z mm)
PMD 005-007 M6x30	Leva Scatto Click Lever	//

In alternativa al precedente:
 In alternative to the previous:

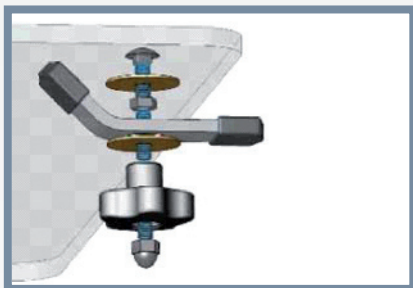
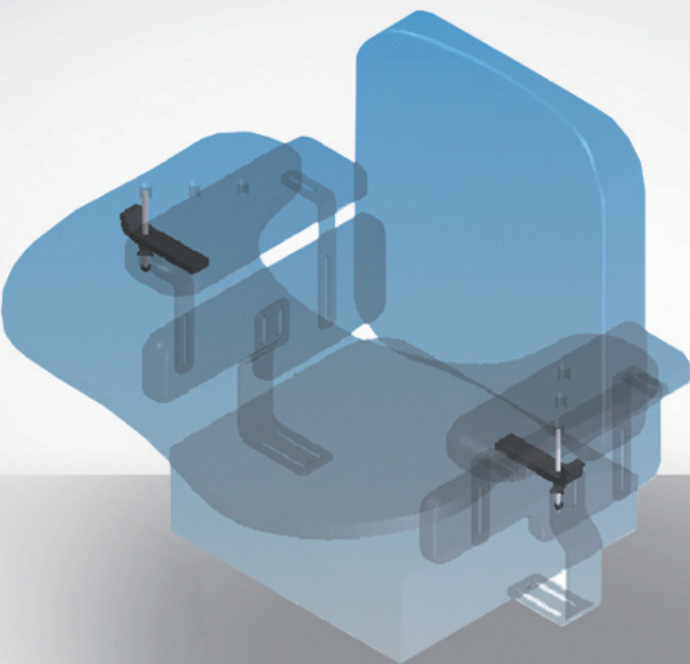


NOME COMPONENTE ITEM	DESCRIZIONE (DESCRIPTION)	DIMENSIONI (X-Y-Z mm) DIMENSIONS (X-Y-Z mm)
PMD 102	Attacco estraibile, viteria inclusa Detachable mounting unit, screws included	70-52-25



Hardware **Tavolino**

Tray Hardware

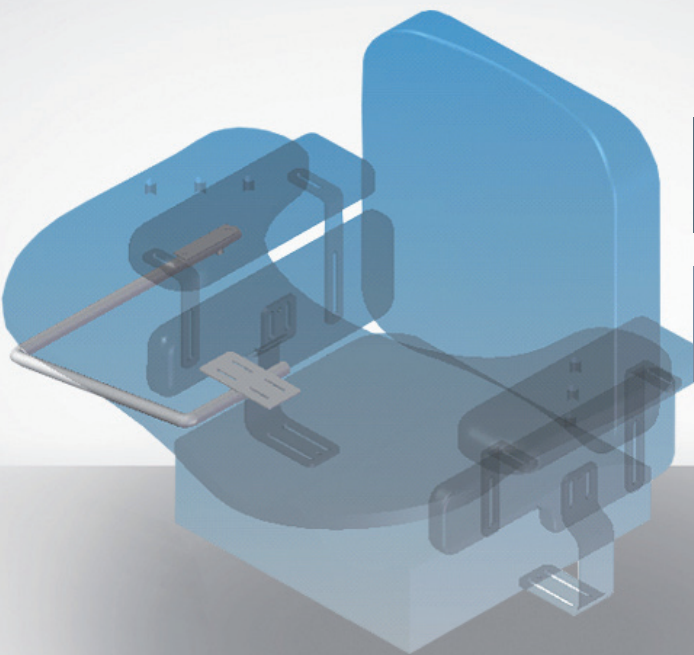


NOME COMPONENTE ITEM	DESCRIZIONE (DESCRIPTION)	DIMENSIONI (X-Y-Z mm) DIMENSIONS (X-Y-Z mm)
PMD 14-HW	Attacco di collegamento per tavolino, Viteria Inclusa <i>Mounting assembly for tray, screws included</i>	



Variabile Tavolino Ribaltabile

Variable Flip Tray



NOME COMPONENTE
ITEM

PMD 14-HW1-GSCH

DESCRIZIONE
(DESCRIPTION)

**Hardware Tavolino Mis.1,
Viteria inclusa
Hardware for tray size 1
screws included**

DIMENSIONI (X-Y-Z mm)
DIMENSIONS (X-Y-Z mm)



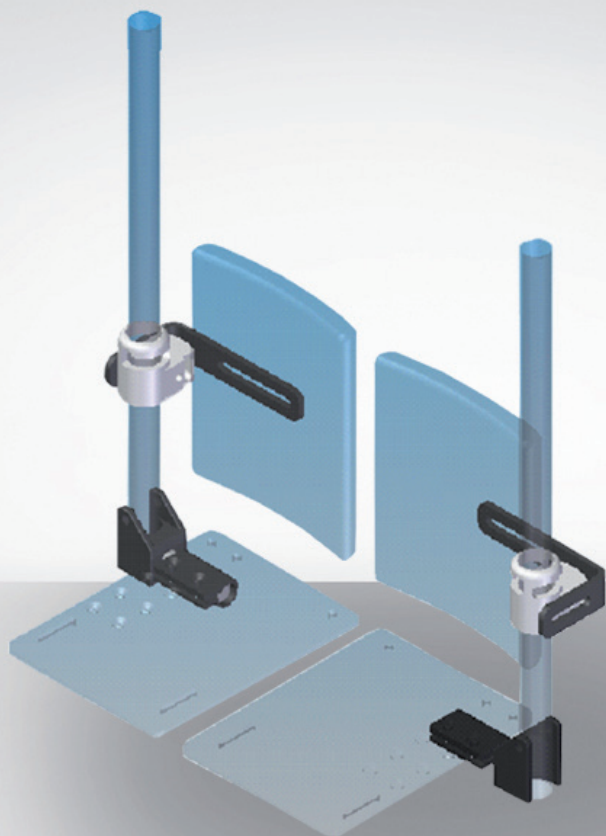
NOME COMPONENTE
ITEM

PMD 14-HW2-GSCH

DESCRIZIONE
(DESCRIPTION)

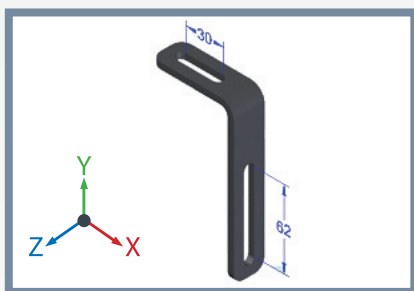
**Hardware Tavolino Mis. 2,
Viteria inclusa
Hardware for tray size 2,
screws included**

DIMENSIONI (X-Y-Z mm)
DIMENSIONS (X-Y-Z mm)

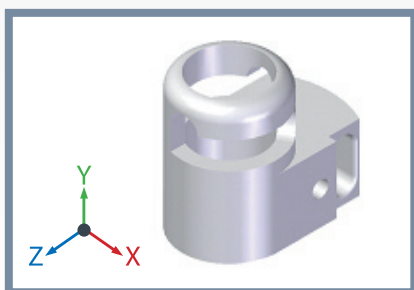


Hardware **Poggiapolpacci**
 Separati (solo su linea ADACTA)

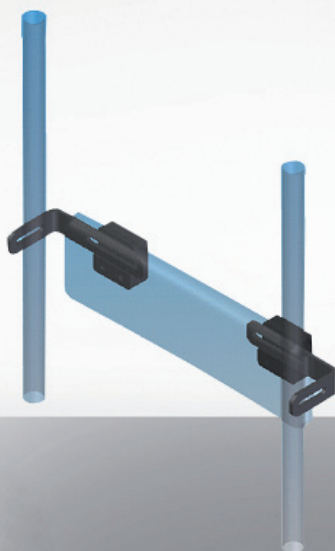
Separate **Calf** Supports Hardware
 (only on ADACTA range)



NOME COMPONENTE ITEM	DESCRIZIONE (DESCRIPTION)	DIMENSIONI (X-Y-Z mm) DIMENSIONS (X-Y-Z mm)
S36	Staffa regolabile ad L serie Media <i>Adjustable L medium bracket</i>	62-120-25

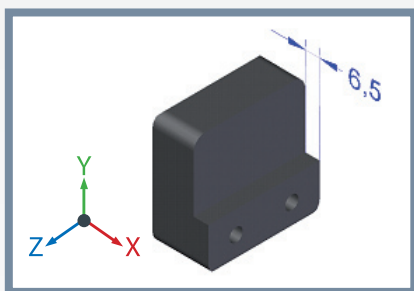


NOME COMPONENTE ITEM	DESCRIZIONE (DESCRIPTION)	DIMENSIONI (X-Y-Z mm) DIMENSIONS (X-Y-Z mm)
PMD 15RDX PMD 15RSX	Inserto per poggia gamba separato ribaltabile (Versione Dx e Sx) Viteria Inclusa <i>Insert for swing-away calf support (Right and Left), screws included</i>	55-50-35

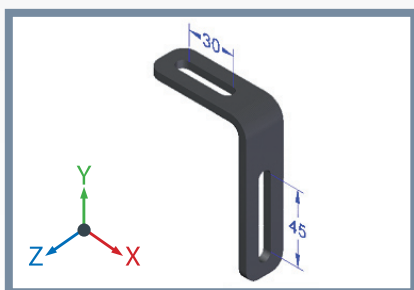


Variabile Poggiapolpacci Unico

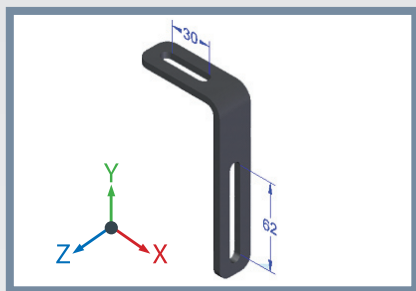
Variable one piece Calf Support Hardware



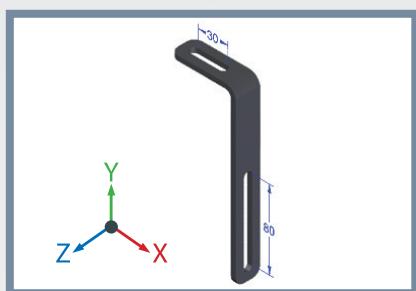
NOME COMPONENTE ITEM	DESCRIZIONE (DESCRIPTION)	DIMENSIONI (X-Y-Z mm) DIMENSIONS (X-Y-Z mm)
PMD 15U-1	Inserto di collegamento poggia polpaccio unico <i>Connecting insert for one piece calf support</i>	25-50-50



NOME COMPONENTE ITEM	DESCRIZIONE (DESCRIPTION)	DIMENSIONI (X-Y-Z mm) DIMENSIONS (X-Y-Z mm)
S36C	Staffa regolabile ad L serie Corta <i>Adjustable L short bracket</i>	62-90-25



NOME COMPONENTE ITEM	DESCRIZIONE (DESCRIPTION)	DIMENSIONI (X-Y-Z mm) DIMENSIONS (X-Y-Z mm)
S36	Staffa regolabile ad L serie Media <i>Adjustable L medium bracket</i>	62-120-25



NOME COMPONENTE ITEM	DESCRIZIONE (DESCRIPTION)	DIMENSIONI (X-Y-Z mm) DIMENSIONS (X-Y-Z mm)
S36L	Staffa regolabile ad L serie lunga <i>Adjustable L long bracket</i>	62-170-25



Minuterie

Screws/Small Components



NOME COMPONENTE
ITEM

DESCRIZIONE
(DESCRIPTION)

DIMENSIONI (mm)
DIMENSIONS (mm)

PMD 006-006-020-7380
PMD 006-006-025-7380

Vite a testa bombata
Button head allen screw

6x20
6x25



NOME COMPONENTE
ITEM

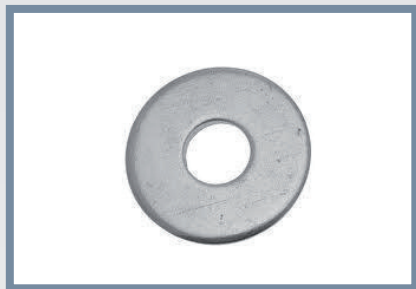
DESCRIZIONE
(DESCRIPTION)

DIMENSIONI (mm)
DIMENSIONS (mm)

PMD 006-006-020-5933

Vite a testa svasata
Head flared screw

6x20



NOME COMPONENTE ITEM	DESCRIZIONE (DESCRIPTION)	DIMENSIONI (mm) DIMENSIONS (mm)
PMD 008-006-018-6593	Rondella	6,4x18
PMD 008-006-024-6593	Large washer	6,4x24



NOME COMPONENTE ITEM	DESCRIZIONE (DESCRIPTION)	DIMENSIONI (mm) DIMENSIONS (mm)
PMD 008-006-011-6798	rondella zigrinata knurled washer	6x12



NOME COMPONENTE ITEM	DESCRIZIONE (DESCRIPTION)	DIMENSIONI (mm) DIMENSIONS (mm)
PMD 005-006	T-nuts T-nuts	6x10

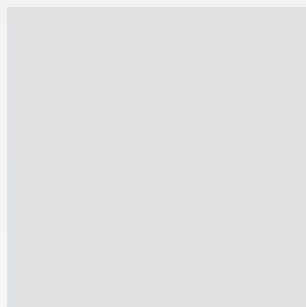
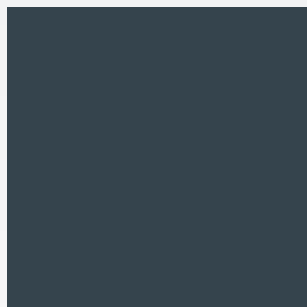
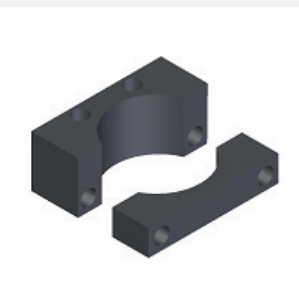
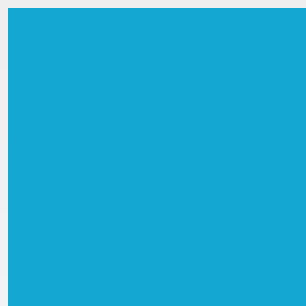
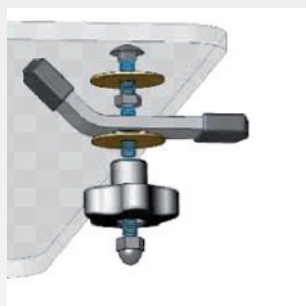
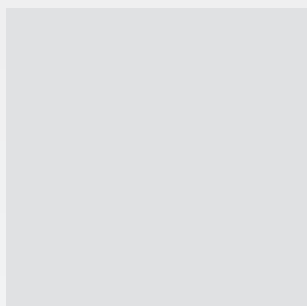
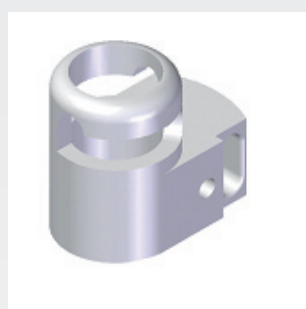
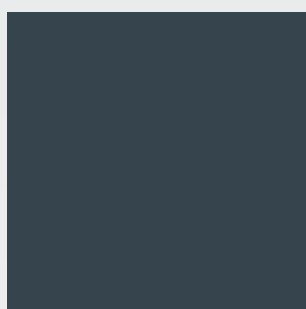
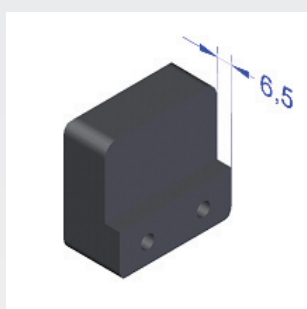
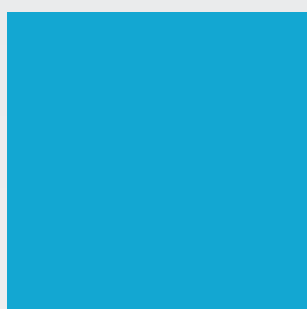
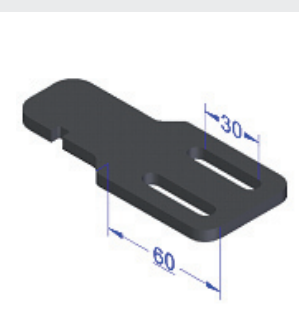


NOME COMPONENTE ITEM	DESCRIZIONE (DESCRIPTION)	DIMENSIONI (mm) DIMENSIONS (mm)
PMD 005-008	Volantino a croce Knob Cross	6x25

PRODOTTO DA / MANUFACTURED BY



Via Montagna Z.I . Lotto 41
72023 Mesagne (Br) - ITALY
Phone + (39) 0831. 777 840
Fax . + (39) 0831. 730 739
Web site: www.promedicare.it
e mail: info@promedicare.it



DISTRIBUITO DA / DISTRIBUTED BY

